



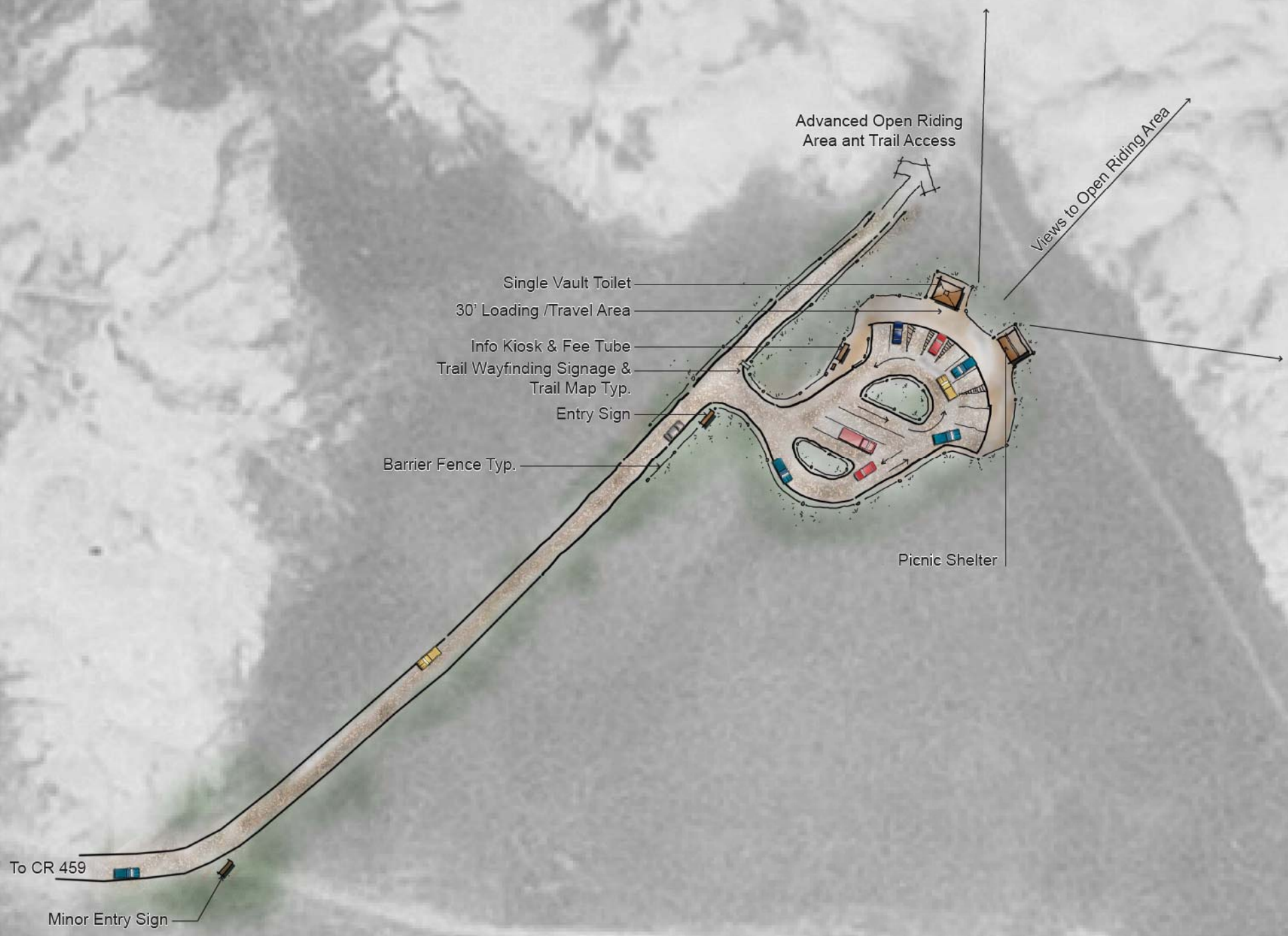
**USFS Rail Road Buttes Preferred Trailhead Concept**

**Parking Summary**

- 28 Parking Stalls (12'x30') 3 ADA
- 35 Large Vehicle (12x60) 1 ADA
- 53 Total Parking Spaces

| Legend |   |
|--------|---|
| 1      | Beginner Riding Area  |
| 2      | Practice Track  |
| 3      | Group Use Area<br>• Shade Structures<br>• Picnic Tables<br>• Pedestrian Access Only |
| 4      | 30' Travel/Unloading Zone   |
| 5      | Bridge Structure Typ.   |
| 6      | Double Accessible Vault Toilet  |
| 7      | Information Kiosk & Fee Tube Typ.   |
| 8      | Gravel Parking  |
| 9      | Dumpster & Enclosure  |
| 10     | Open Hill Climb Area  |
| 11     | Existing Bench  |
| 12     | Size Restrictor Gate and Trail Signage  |
| 13     | Intermediate Open Riding Area   |
| 14     | Full Size Vehicle Access to Trail 7070  |

# Rail Road Butte



## USFS Rail Road Buttes Preferred Trailhead Concept -South

### Parking Summary

- 10 Parking Stalls (12'x30') 3 ADA
- 4 Large Vehicle (12x60) 1 ADA
- 14 Total Parking Spaces